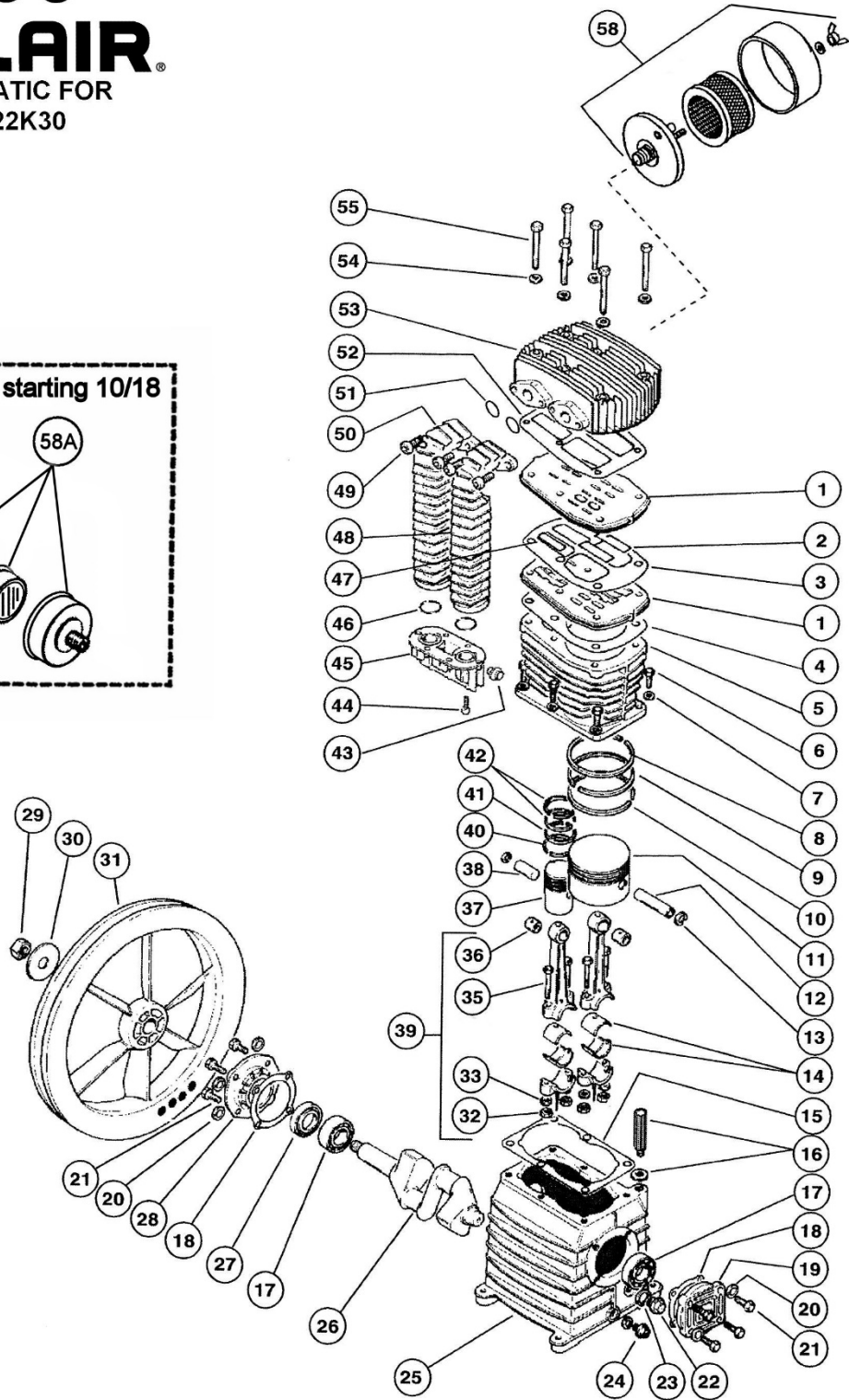
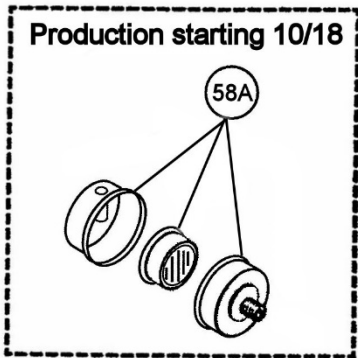
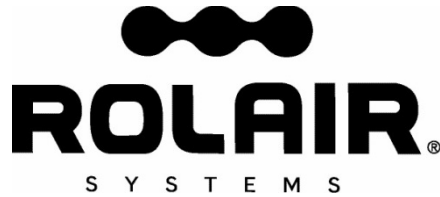


ROLAIR
 SCHEMATIC FOR
 PMP22K30





PARTS LIST FOR PMP22K30

Sch. #	Description	Part #	Qty.	Sch. #	Description	Part #	Qty.
1	Valve Plate	32702750CH	2	36	Bushing*	31102250CH	2
2	Valve - LP	32702400CH	4	37	Piston - HP	31203050CH	1
3	Gasket	30502280CH	1	38	Piston Pin - HP	31202240CH	1
4	Gasket	30502290CH	1	39	Connecting Rod Assy.	31101990CH1	NLA
5	Cylinder	31602020CH	1		Connecting Rod Assy.**	311SL11005CH1	2
6	Bolt	37302420CH	6	40	Ring - HP	31202210CH	1
7	Washer	37504220CH	6	41	Ring - HP	31202200CH	1
8	Ring - LP	31202160CH	1	42	Ring - HP	31203390CH	2
9	Ring - LP	31202170CH	1	43	Plug	36506800CH	1
10	Ring - LP	31202180CH	1	44	Bolt	37302480CH	6
11	Piston - LP	31202190CH	1	45	Connector	3690211ACH	1
12	Piston Pin - LP	31202230CH	1	46	O-Ring	30502400CH	2
13	Snap Ring	37602260CH	4	47	Valve - HP	32702390CH	2
14	Bearing Shell (for 31101990CH connecting rod)	31102130CH	2	48	Right Intercooler	32902720CH	1
				49	Bolt	37302530CH	4
	Bearing Shell (for 311SL11005CH connecting rod)	3119013017CH	2	50	Left Intercooler	32902710CH	1
				51	O-Ring	30502500CH	2
15	Gasket	30502300CH	1	52	Gasket	30502270CH	1
16	3/8" Breather/Oil Fill Plug	36507050CH	1	53	Head	31302700CH	1
				54	Washer	37502320CH	6
17	Bearing	30302140CH	2	55	Bolt	37308060CH	6
18	Gasket	30502310CH	2	56	Bolt	37302530CH	2
19	Bearing Carrier	30402740CH	1	57	Aftercooler	32903730CH	1
20	Washer	37508130CH	8	58	Intake Filter Assembly (before 10/18)	FS14075	1
21	Bolt	37301140CH	8		Filter Element for FS14075	431	1
22	Sight Gauge (Includes 30500130CH Gasket)	36500140CH	1		58A	Intake Filter Assembly (after 10/18)	FS10072
23	Gasket	30500130CH	1		Filter Element for FS10072	433	1
24	Plug	BLSQPL0250	1	KITS			
25	Crankcase	33102030CH	1		Gasket Set (3,4,15,18,23,52)	K30GASKETS	1
26	Crankshaft	30202000CH	1		Ring Set (8,9,10,40,41,42)	K30RINGS	1
27	Oil Seal	30302150CH	1		Valve Plate Assembly (1,2,3,4,47,52)	3000VK30	1
28	Bearing Carrier	30402800CH	1		Piston Assembly – LP (8,9,10,11,12,13)	3000PLPK30	1
29	Nut	37403780CH	1		Piston Assembly – HP (13,37,38,40,41,42)	3000PHPK30	1
30	Washer	37502450CH	1		Valve Kit (2, 3, 4, 47, 52)	VKK30	1
31	Flywheel	31003040CH	1				
32	Nut	37402590CH	4				
33	Washer	17500230CH	4				
35	Bolt	37302460CH	4				

*Bushing is not machined to fit piston pin if ordered separate from connecting rod and must be bored to .005" over O.D. of piston pin after being pressed into place (For connecting rod with casting number of 31101990 only.)

**Has casting number of SL11165. Must order 311SL11005CH1 connecting rod assembly when replacing 31101990CH rod. Bearing shells used in 31101990CH and 311SL11005CH connecting rods are not interchangeable.

