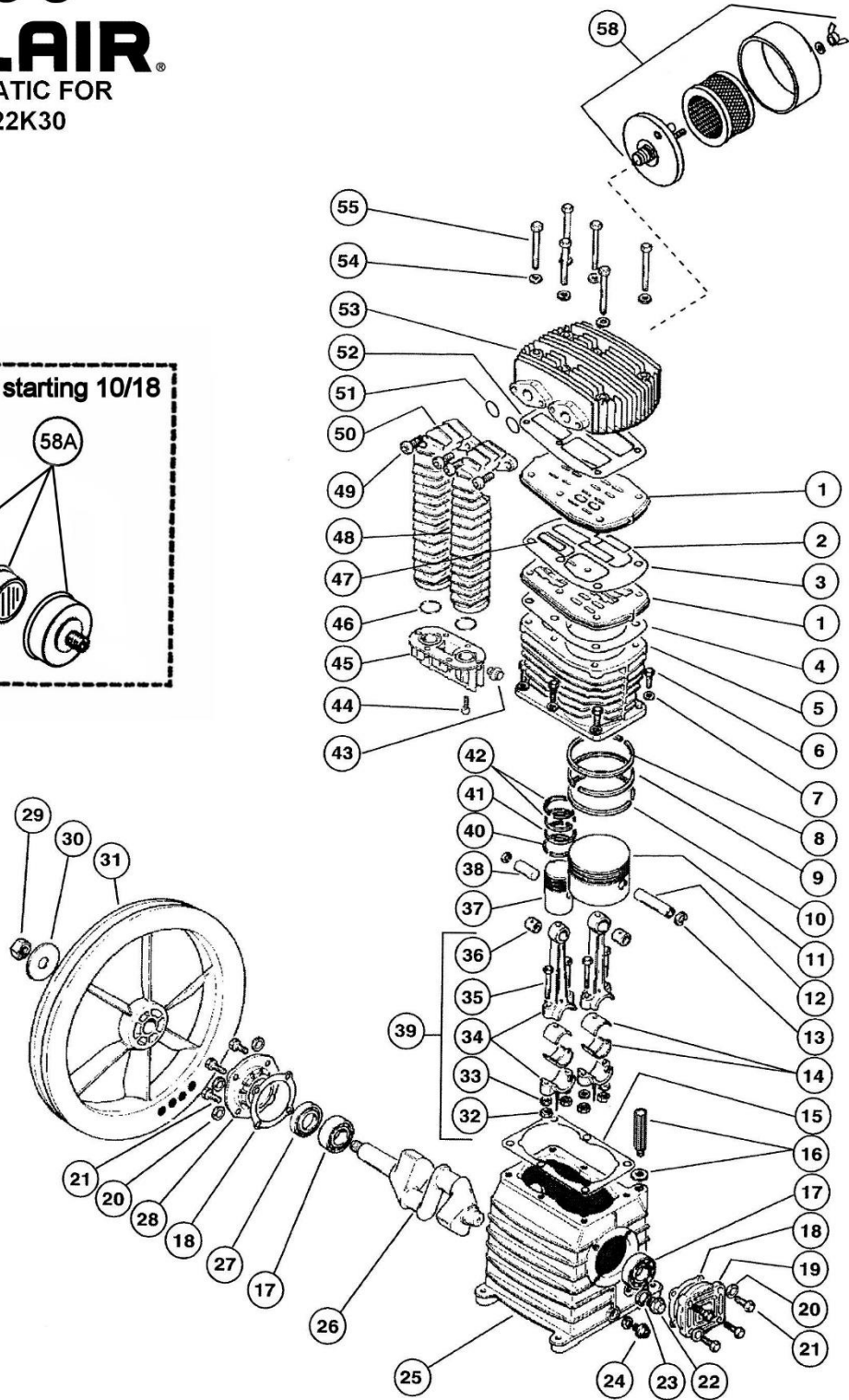
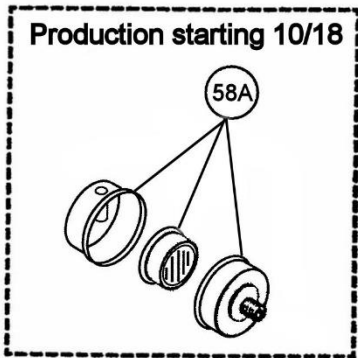
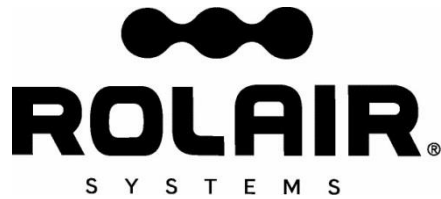


**ROLAIR**  
 SCHEMATIC FOR  
 PMP22K30





## PARTS LIST FOR PMP22K30

Sch. #	Description	Part #	Qty.	Sch. #	Description	Part #	Qty.
1	Valve Plate	32702750CH	2	35	Bolt	37302460CH	4
2	Valve - LP	32702400CH	4	36	Bushing*	31102250CH	2
3	Gasket	30502280CH	1	37	Piston - HP	31203050CH	1
4	Gasket	30502290CH	1	38	Piston Pin - HP	31202240CH	1
5	Cylinder	31602020CH	1	39	Connecting Rod Assy.	31101990CH1	NLA
6	Bolt	37302420CH	6		Connecting Rod Assy.**	311SL11005CH1	2
7	Washer	37504220CH	6	40	Ring - HP	31202210CH	1
8	Ring - LP	31202160CH	1	41	Ring - HP	31202200CH	1
9	Ring - LP	31202170CH	1	42	Ring - HP	31203390CH	2
10	Ring - LP	31202180CH	1	43	Plug	36506800CH	1
11	Piston - LP	31202190CH	1	44	Bolt	37302480CH	6
12	Piston Pin - LP	31202230CH	1	45	Connector	3690211ACH	1
13	Snap Ring	37602260CH	4	46	O-Ring	30502400CH	2
14	Bearing Shell (for 31101990CH connecting rod)	31102130CH	2	47	Valve - HP	32702390CH	2
				48	Right Intercooler	32902720CH	1
				49	Bolt	37302530CH	4
	Bearing Shell (for 311SL11005CH connecting rod)	3119013017CH	2	50	Left Intercooler	32902710CH	1
				51	O-Ring	30502500CH	2
52	Gasket	30502270CH	1				
15	Gasket	30502300CH	1	53	Head	31302700CH	1
16	3/8" Breather/Oil Fill Plug	36507050CH	1	54	Washer	37502320CH	6
				55	Bolt	37308060CH	6
17	Bearing	30302140CH	2	56	Bolt	37302530CH	2
18	Gasket	30502310CH	2	57	Aftercooler	32902730CH	1
19	Bearing Carrier	30402740CH	1	58	Intake Filter Assembly (before 10/18)	FS14075	1
20	Washer	37508130CH	8		Filter Element for FS14075	431	1
21	Bolt	37301140CH	8	58A	Intake Filter Assembly (after 10/18)	FS10072	1
22	Sight Gauge	36500140CH	1		Filter Element for FS10072	433	1
23	Gasket	30500130CH	1				
24	Plug	BLSQPL0250	1	<b>KITS</b>			
25	Crankcase	33102030CH	1		Gasket Set (3,4,15,18,23,52)	K30GASKETS	1
26	Crankshaft	30202000CH	1		Ring Set (8,9,10,40,41,42)	K30RINGS	1
27	Oil Seal	30302150CH	1		Valve Plate Assembly (1,2,3,4,47,52)	3000VK30	1
28	Bearing Carrier	30402800CH	1		Piston Assembly - LP (8,9,10,11,12,13)	3000PLPK30	1
29	Nut	37403780CH	1		Piston Assembly - HP (13,37,38,40,41,42)	3000PHPK30	1
30	Washer	37502450CH	1		Valve Kit (2, 3, 4, 47, 52)	VKK30	1
31	Flywheel	31003040CH	1				
32	Nut	37402590CH	4				
33	Washer	17500230CH	4				
34	Connecting Rod w/Upper Bushing	31101990CH	NLA				
	Connecting Rod** w/Upper Bushing	311SL11005CH	2				

\*Bushing is not machined to fit piston pin if ordered separate from connecting rod and must be bored to .005" over O.D. of piston pin after being pressed into place (For connecting rod with casting number of 31101990 only.)

\*\*Has casting number of SL11165. Must order 311SL11005CH1 connecting rod assembly when replacing 31101990CH rod. Bearing shells used in 31101990CH and 311SL11005CH connecting rods are not interchangeable.

