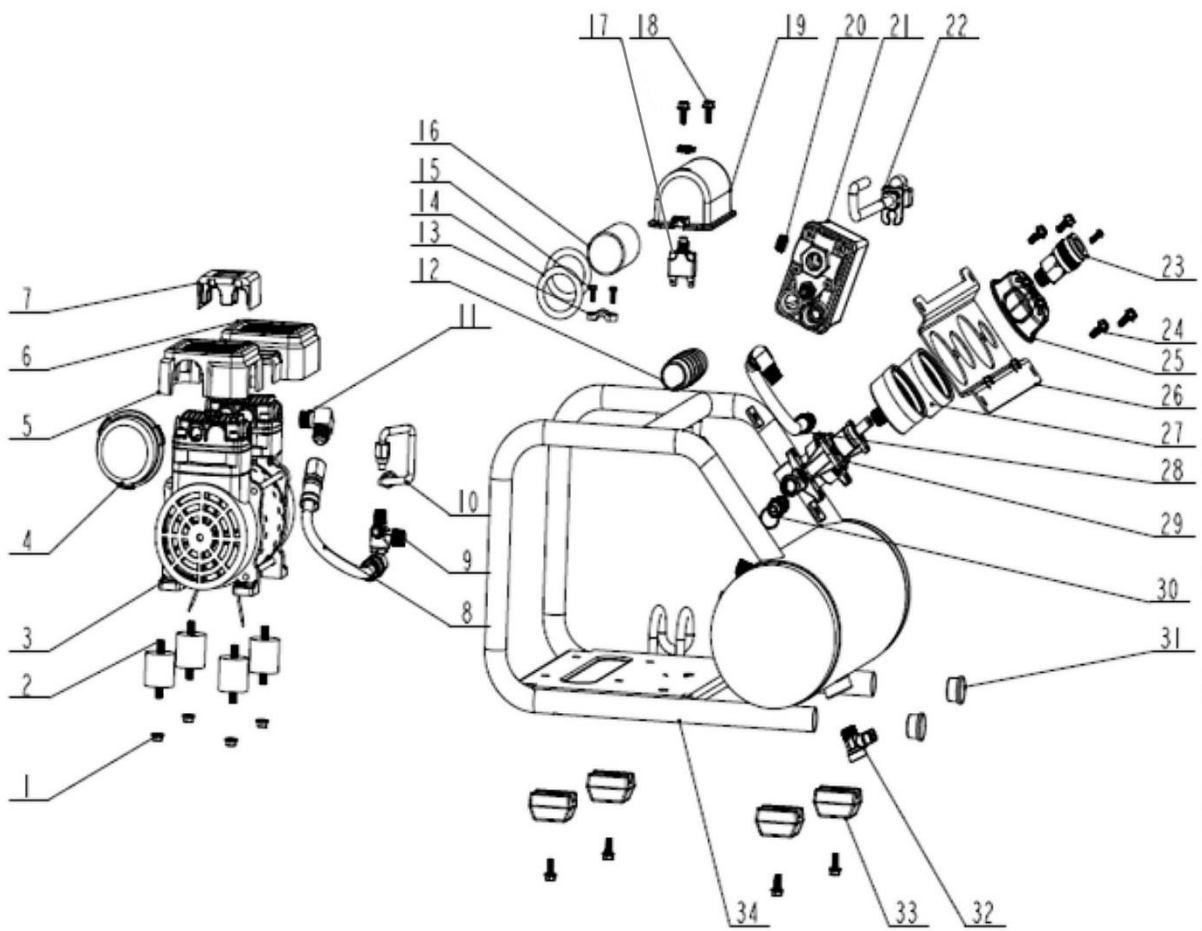
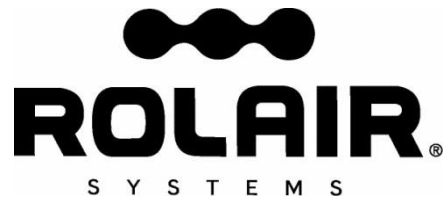



**ROLAIR**  
SCHEMATIC FOR  
AB5PLUS





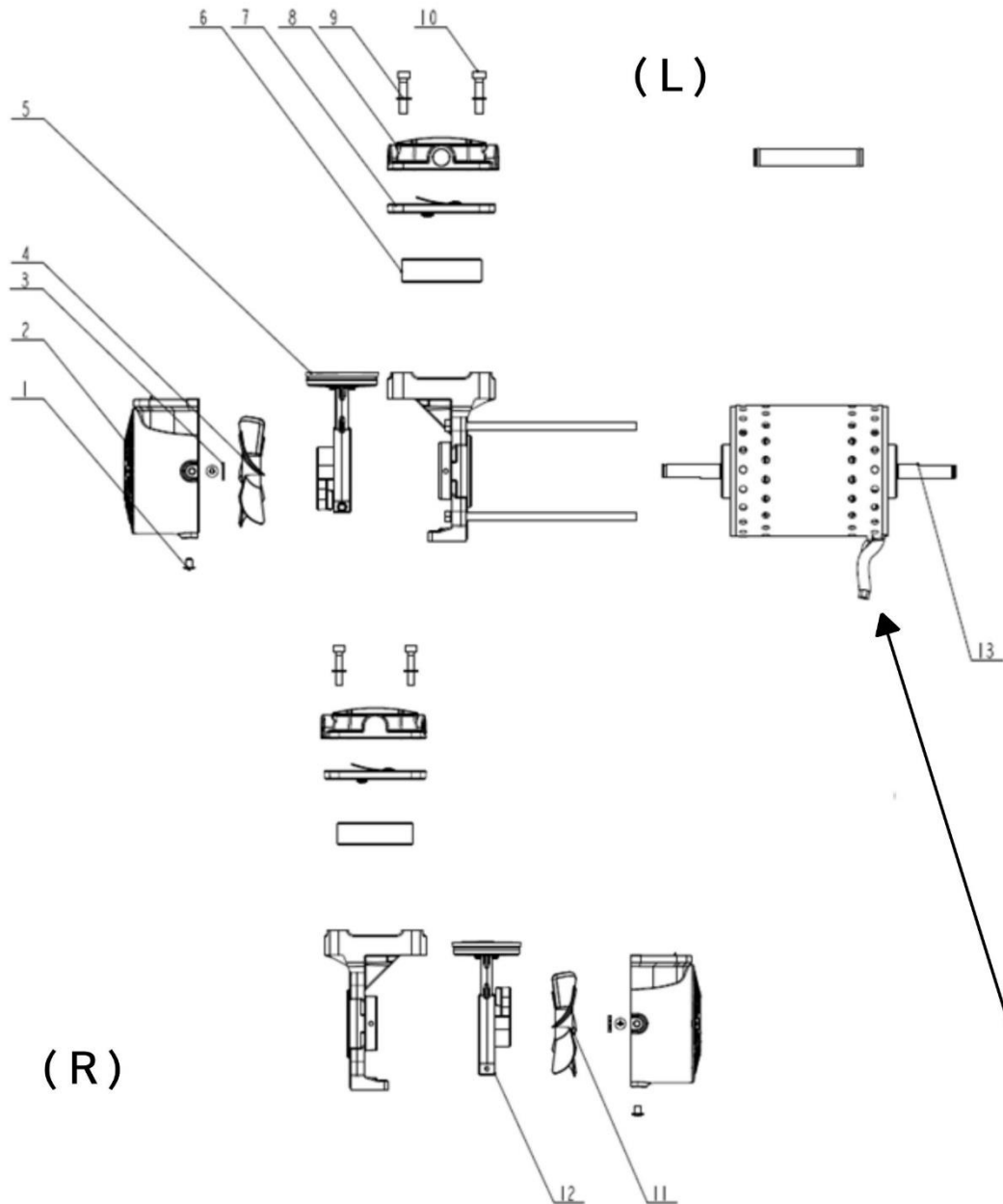
## PARTS LIST FOR MODEL AB5PLUS

Schem. #	Description	Part #	Qty.
1	Nut	U5002	4
2	Vibration Dampener	U6003	4
3	Complete Motor/Pump Assembly	AB5P1	1
4	Intake Filter	U4001	1
5	Heat Shield (R)	AB5P2	1
6	Heat Shield (L)	AB5P3	1
7	Fixed Shield	AB5P4	1
8	Transfer Tube	AB5AU2	1
9	Check Valve	AB5P5	1
10	Unloader Line	AB5AU4	1
11	Elbow	U1011	1
12	Handle Grip	AB5AU5	1
13	Wire Clamp	JC10P26	1
14	Clamp Ring	AB5AU7	2
15	Bolt (M4x10)	JC20AU8	3
16	Capacitor	AB5P6	1
17	Manual Reset	AB5P7	1
18	Bolt (M5x12)	AB5AU13	8
19	Capacitor Cover	AB5AU9	1
20	Pipe Plug	AB5AU11	3
21	Pressure Switch	AB5P8	1
22	Power Cord	U5001	1
23	Coupler	AB5P9	1
24	Bolt (M5x12)	JC10P22	4
25	Adjustment Knob	JC20AU7	1
26	Control Panel	AB5P10	1
27	Pressure Gauge	AB5AU15	2
28	Rubber Hose	AB5P11	1
29	Pressure Regulator	AB5P12	1
30	Safety Valve	U6004	1
31	Plastic Plug	AB5AU19	2
32	Drain Valve	AB5P13	1
33	Rubber Foot	AB5AU20	4
34	Tank Assembly	AB5AU18	1

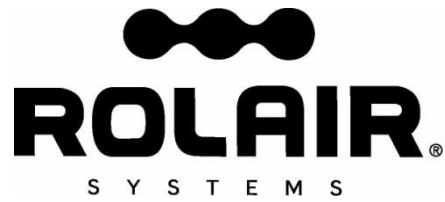


# ROLAIR

PUMP SCHEMATIC FOR  
AB5PLUS



NOTE: Left and right side components are determined by viewing motor/pump from the back or with power cord coming out of lower right-hand side of motor.



## PARTS LIST FOR MODEL AB5PLUS PUMP

Schem. #	Description	Part #	Qty.
1	Bolt M4x6	AB5AU21	6
2	Shroud	AB5AU22	2
3	Retainer Ring	AB5AU23	2
4	Fan (Left)	AB5AU24	1
5	Crank/Connecting Rod Assembly (Left)	AB5AU25	1
6	Cylinder	AB5AU26	2
7	Valve Plate Assembly	AB5AU27	2
8	Head	AB5AU28	1
9	Washer	AB5AU29	8
10	Bolt M5x25	AB5AU30	8
11	Fan (Right)	AB5AU31	1
12	Crank/Connecting Rod Assembly (Right)	AB5AU32	1
13	Stator	AB5P14	1