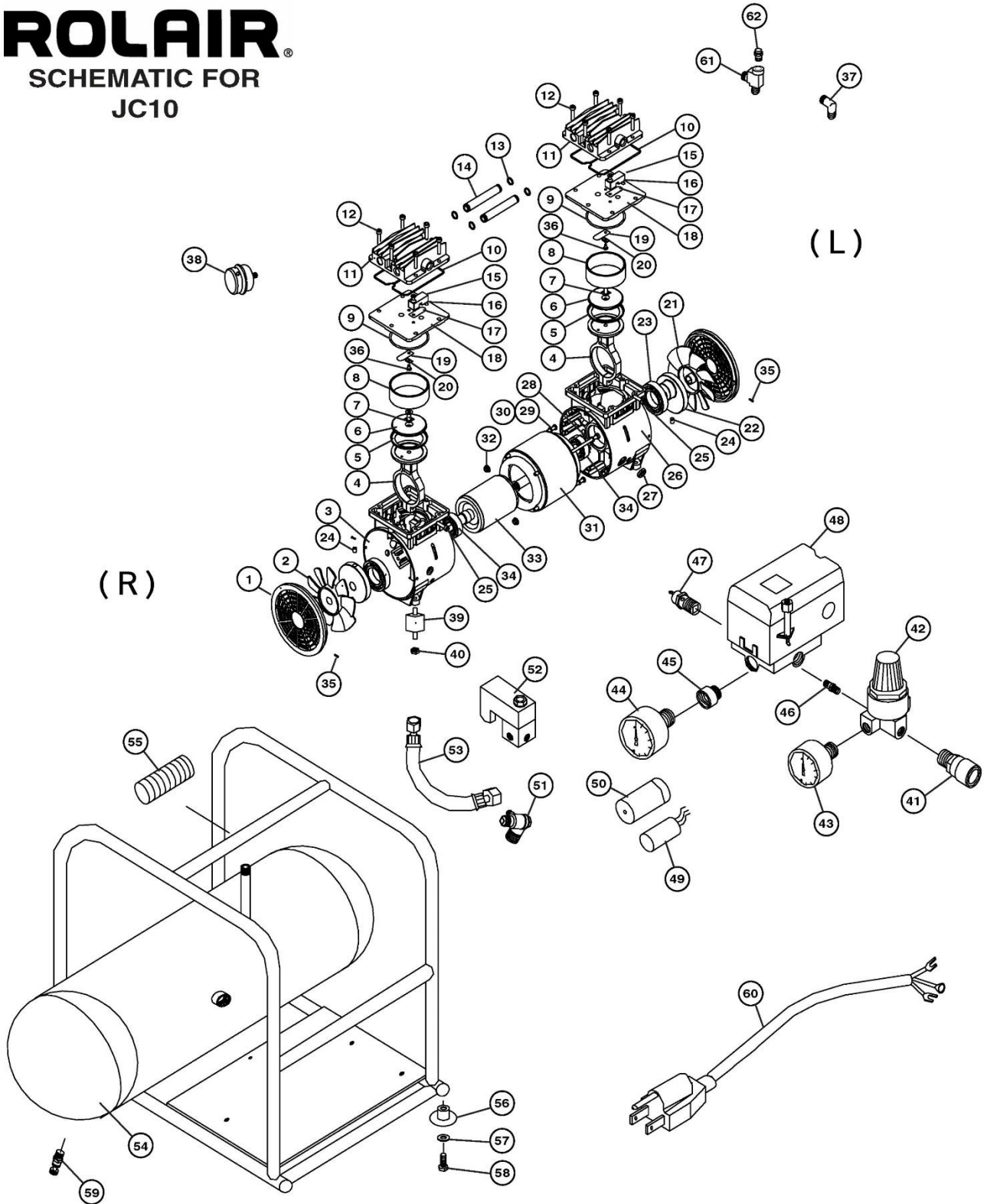
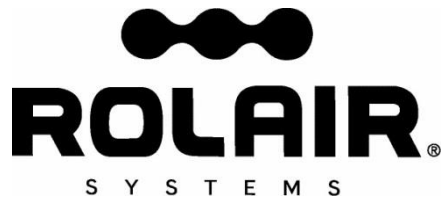

ROLAIR[®]
 SCHEMATIC FOR
 JC10



NOTE: Schematic shows backview of motor/pump causing Left (L) and Right (R) side fans and crankcases to be transposed.



PARTS LIST FOR MODEL JC10

Schem #	Description	Part #	Qty.	Schem #	Description	Part #	Qty.
1	Motor Cover	JC800-1	2	32	Nut	JC800-32	4
2	Fan (right side only)	U1003	1	33	Rotor*	N/A	1
3	Crankcase (right side only)	JC800-3	1	34	Bearing	JC800-34	2
4	Connecting Rod	JC800-4	2	35	Screw	JC800-35	4
5	Piston Ring	JC800-5	2	36	Screw	JC800-36	2
6	Piston Cap	JC800-6	2	37	Elbow	U1011	1
7	Cap Bolt	JC800-7	2	38	Air Filter Assembly	U4001	1
8	Cylinder	JC800-8	2	39	Vibration Dampener	U6003	4
9	O-Ring	JC800-9	2	40	Nut	U5002	4
10	Head Gasket	JC800-10	2	41	Coupler	U9001	1
11	Head	JC800-11	2	42	Regulator	U3002	1
12	Head Bolt	JC800-12	12	43	Gauge – Line	U3001	1
13	O-Ring	JC800-13	4	44	Gauge – Tank	U3003	1
14	Connecting Tube	JC800-14	2	45	Bushing	JC800-45	1
15	Bolt	JC800-15	2	46	Nipple	U5003	1
16	Valve Stop	JC800-16	2	47	Safety Relief Valve	U6004	1
17	Valve – Exhaust	JC800-17	2	48	Pressure Switch	U6005	1
18	Valve Plate	JC800-18	2	49	Capacitor	JC800-49	1
19	Valve – Intake	JC800-19	2	50	Cover – Capacitor	JC800-50	1
20	Washer	JC800-20	2	51	Check Valve	JC800-51	1
21	Fan (left side only)	U1002	1	52	Solenoid – Unloader	JC800-52	1
22	Eccentric	JC800-22	2	53	Braided Discharge Line	U1012	1
23	Bearing	JC800-23	2	54	Tank Assembly	JC800-54	1
24	Setscrew	JC800-24	2	55	Handle Grip	JC800-55	1
25	Bolt – Con Rod	JC800-25	2	56	Rubber Foot	JC800-56	4
26	Crankcase (left side only)	JC800-26	1	57	Washer	JC800-57	4
27	Box Connector	JC800-27	1	58	Bolt	JC800-58	4
28	Bolt	JC800-28	2	59	Drain Valve	U6002	1
29	Bolt	JC800-29	2	60	Cord with Plug	U5001	1
30	Washer	JC800-30	4	61	Brass Elbow/Tee	JC800-61	1
31	Stator*	N/A	1	62	Cold-Start Valve	JC800-62	1

* Rotor & Stator are not cost effective to replace. Order complete motor/pump instead, part# U1200.

